

CG | hospitality

# Kitchen Cabinets





*Our kitchen cabinets are manufactured both overseas and domestically, offering flexible options for style and delivery timeline preferences.*

**The following specifications and options apply to all of our cabinets:**

**SUBSTRATE:** Plywood and High Density MDF box options

**DOORS:** Solid Wood and High Density MDF options

**CABINET PULLS:** Custom PVD hardware reduces scratching and wear and tear

**HARDWARE:** Soft close glides and hinges for soft close doors and drawers

**LED LIGHTING:** Under cabinet LED lighting available

**FINISH:** Natural grain veneer look, painted, or durable high-end laminate options

**STONE COUNTERTOPS:** Many on-trend colors are available in 3/4", 1.25", 1.5" or other custom mitered heights

**LEAD TIMES:** Overseas 10 to 12 weeks, domestic 6 to 8 weeks

# Current Trends



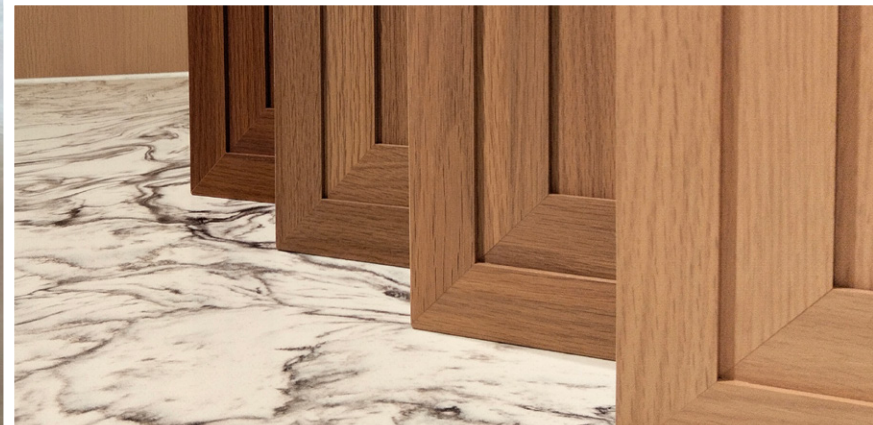
# Micro Shaker

The Micro Shaker is a modern cabinet door style featuring shaker detailing only along the outer ¼" of the door edge. This design highlights the beautiful wood grain on the center panel while providing a durable edge for lasting quality.



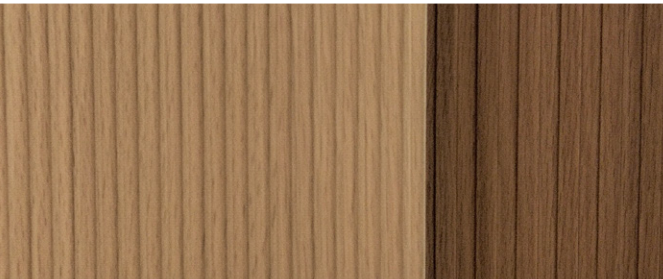
# Double Shaker

The double shaker takes us back to when quality was a focus in life. The art deco style of the stepped shaker look has come back to give a luxury look to any space.



# Fluted Panel

Fluted panels have become the epitome of luxury and modern design. Whether they are used throughout a space or as a thoughtful accent, they bring an elevated sense of sophistication and style to any setting.



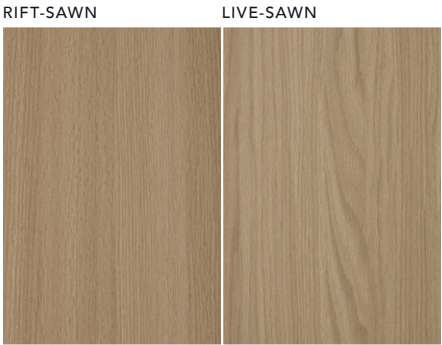
# Cabinet Finish Options



**FRENCH VANILLA OAK**



**MOCHA OAK**



**PALE OAK**



**BARN OAK**



**TAWNY OAK**



**BURNISHED OAK**



**BURNT OAK**

# Stone Options

Our engineered quartz surfaces offer the perfect balance of durability and sophisticated style. Countertops are offered in standard heights of 3/4", 1.25", and 1.5". Custom heights are available upon request. For personalized options and further details, please contact your sales representative.



**DIAMOND WHITE**



**NIGHT BLOOM**



**GOLDEN MAZE**



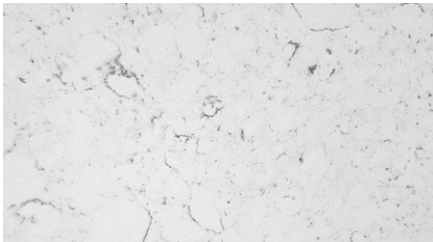
**CALACATTA LEO**



**CALACATTA ROYAL**



**STARRY NIGHT**



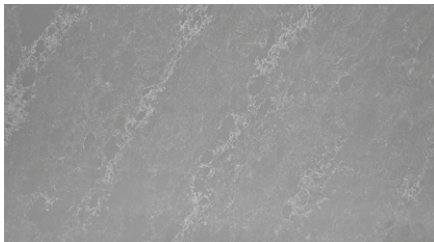
**TUSCAN CARRERA**



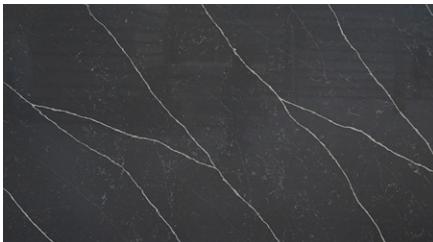
**CALACATTA EVE**



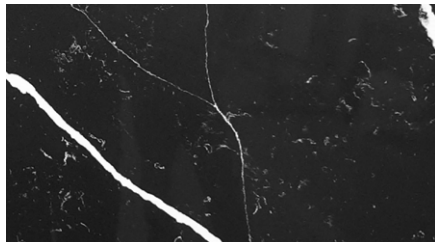
**CALACATTA CLASSIC**



**MIDNIGHT STARS**



**ST. LAURENT**



**NERO MARQUINA**

# CG | hospitality

Contact our sales team to learn more about our services or schedule a consultation:

[info@cgafurniture.com](mailto:info@cgafurniture.com) | 847.636.2725